



GENERAL

- YARD NAME CanalConstruction
- FLAG Egypt
- HULL MATERIAL Aluminum
- SUPERSTRUCTURE Aluminum
- BASIC FUNCTIONS Pilot duties
- CLASSIFICATION BV

DIMENSIONS

- LENGTH O.A. 16.80 m
- BEAM O.A. 5.20 m
- DEPTH AFT 2.4/2.9m

TANK CAPACITIES

- FUEL OIL 2000 Liters
- FRESH WATER 100 Liters

PERFORMANCES (TRIALS)

- SPEED 20.00 kn

PROPULSION SYSTEM

- MAIN ENGINES 2x Cummins
- TOTAL POWER 425 kw
- GEARBOXES ZF
- PROPELLERS Fixed -pitch propellers

ELECTRICAL EQUIPMENT

- BATTERY SETS 24V DC
- SHORE CONNECTION 400 V AC / 50 m cable
- BATTERY CHARGER 24V 200 AH
- GENERATOR SET perkins 20 kw

LIFE SAVING EQUIPMENT

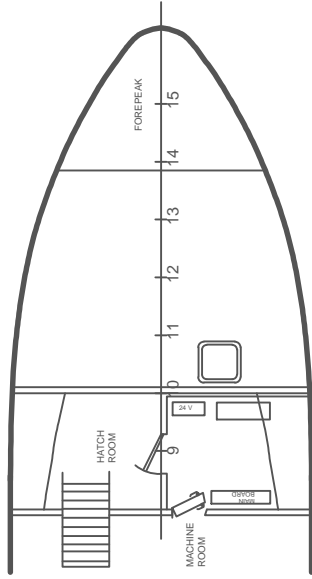
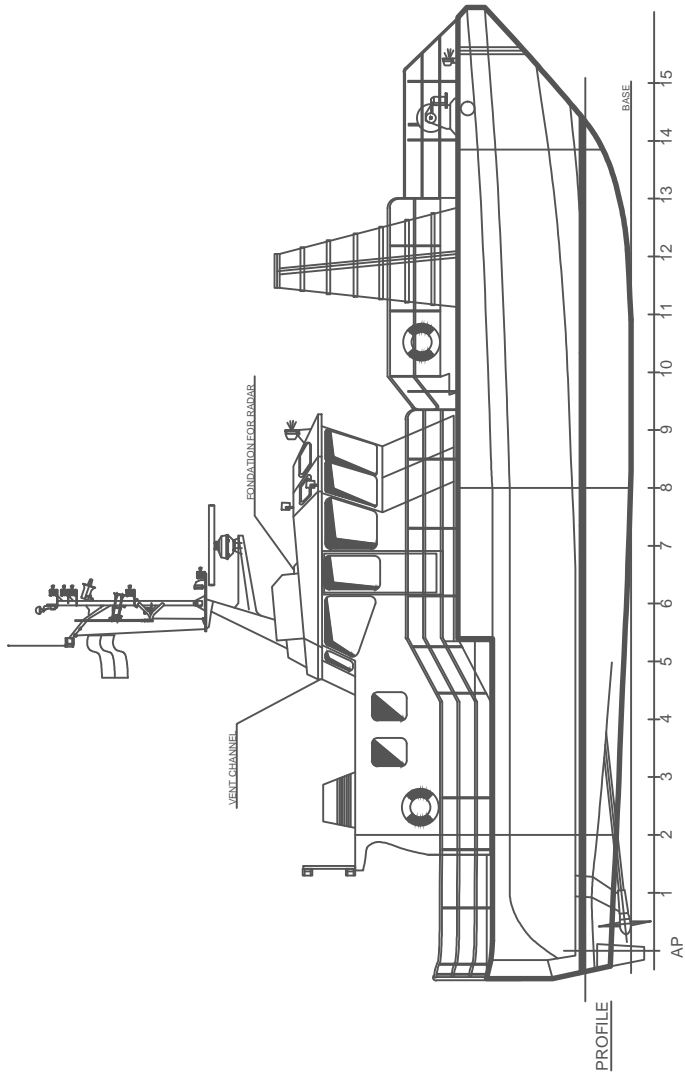
- LIFE JACKETS 8
- LIFE RAFTS 2 x RFD 7 persons
- LIFE BUOYS 2
- FIRE EXTINGUISHERS 1 x 6 kg dry powder 1x9 l foam

ACCOMMODATION

- WHEELHOUSE 2 x 4 seats
- BELOW MAIN DECK Settee/bunk, galley, storage, sanitary space
- AIR-CONDITIONING Provided in wheelhouse and accommodation

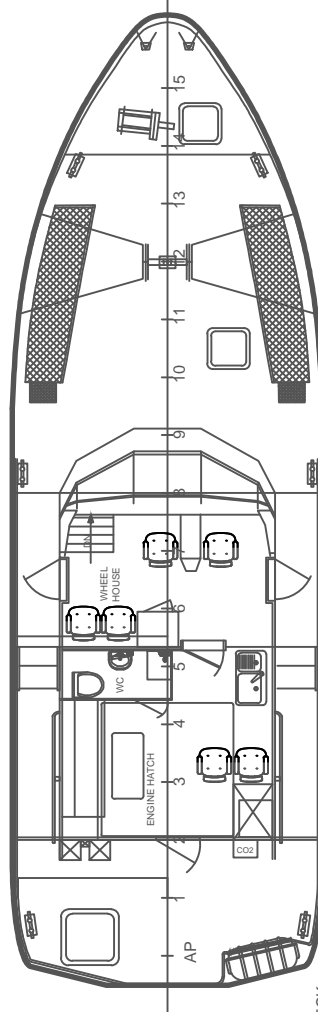
NAUTICAL AND COMMUNICATION EQUIPMENT

- RADAR Furuno, 1832
- SEARCHLIGHT 24 V 250 W
- VHF Sailor RT 2048
- MAGNETIC COMPASS Ritchie, HB 71
- ECHO SOUNDER Raytheon, ST6 0
- GPS Furuno, GP -32 GPS



MAIN DIMENSIONS:

- LENGTH OF HULL** 16.80 m
- LENGTH WL** 14.99 m
- BREATH OF HULL** 5.20 m
- DEPTH** 2.4/2.9 m
- STATION SPACING** 1.00 m



Jacobs Spijler dreef 196
2132 ZZ Hoofddorp
The Netherlands
Tel. +31(0)23-3547310

16.8M-PILOT-BOAT

Title : GENERAL - ARRANGEMENT		PROJ. No. : AAM2016011
Scale :	Drawn by : Size :	Dwg. No. :
	Omnia magaly A 0	Date : 2-11-2016
		AAM2016011-000-01

This drawing is protected by copyright and property of the designers. No part whatsoever may be copied, reproduced, modified or stored in any manner without permission.